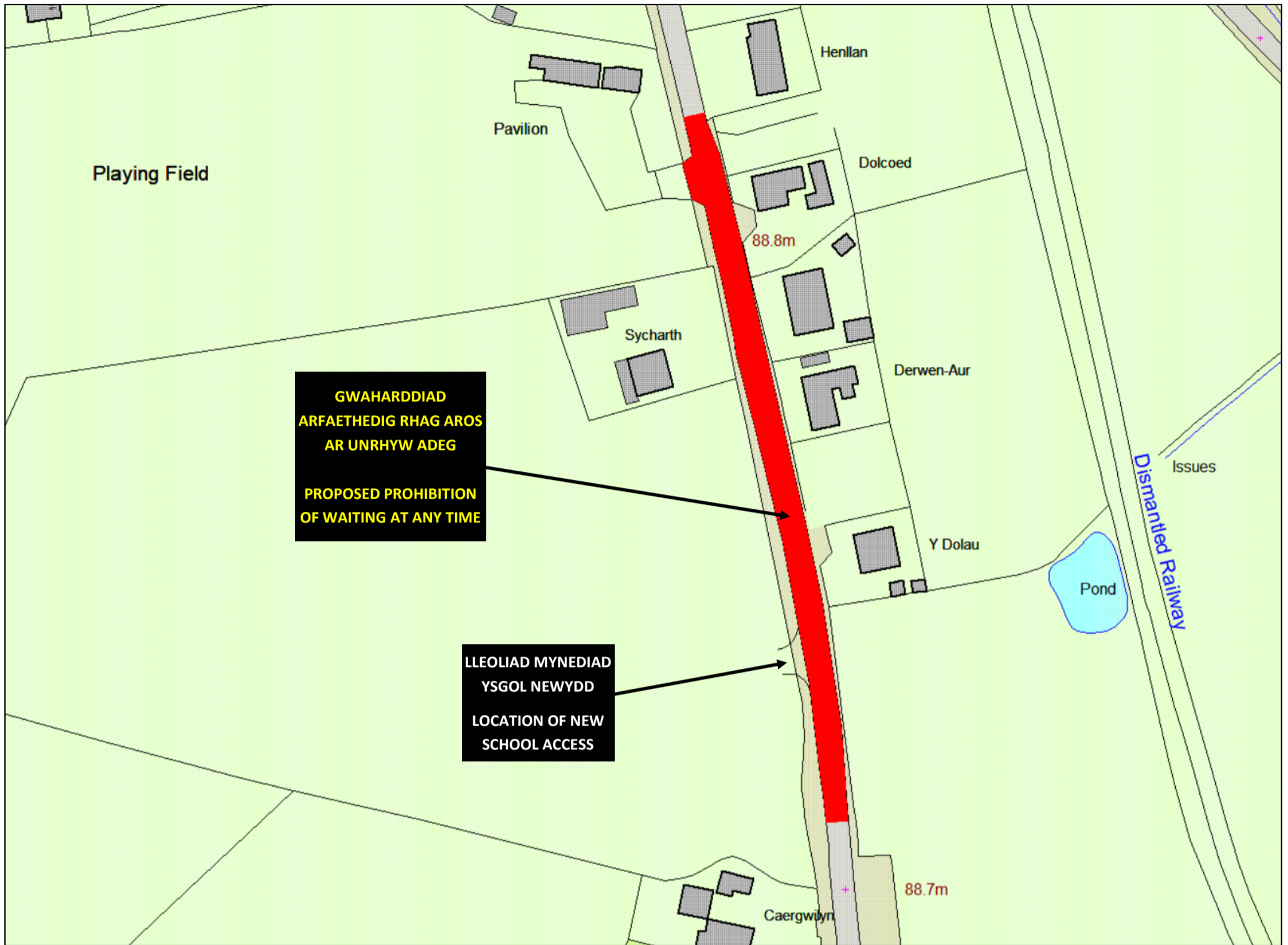


CYNGOR SIR CEREDIGION COUNTY COUNCIL



Rhodri Llwyd  
Prifffyrdd a Gwasanaethau Amgylcheddol  
Canolfan Rheidol, Rhodfa Padarn, Aberystwyth, SY23 3UE  
Highways and Environmental Services  
Canolfan Rheidol, Rhodfa Padarn, Aberystwyth, SY23 3UE



A482 Felinfach

© Hawffraint y Goron a hawliau cronfa ddata 2024 Arolwg Ordnans 100024419. Ni chaniateir i chi gopio, is-drwyddedu, dosbarthu neu werthu unrhyw ran o'r data hwn ar unrhyw ffurf i drydydd parti.  
© Crown copyright and database rights 2024 Ordnance Survey 100024419. You are not permitted to copy, sub-licence, distribute or sell any of this data to third parties in any form.

Mae'r Cyngor yn cynnig gwneud Gorchymyn Cyngor Sir Ceredigion (Gwahardd a Chyfyngu ar Aros a Llwytho a Dadlwytho) 2019 (Felinfach) (Gorchymyn Diwygio Rhif 12) 2024. Bydd hyn yn cyflwyno Gwaharddiad newydd ar Aros ar Unrhyw Adeg ar y naill ochr a'r llall i'r A482 o 1.75 metr i'r gogledd o ffin ddeheuol yr eiddo sy'n dwyn yr enw Henllan, tua'r de hyd at 8 metr i'r de o bwynt terfyn deheuol presennol y terfyn cyflymder o 20mya. Gallwch weld y manylion ar-lein drwy fynd i <https://www.ceredigion.gov.uk/preswylwr/teithio-ffyrdd-a-pharcio/yngynghoriadau/gorchymynion/> ac yn Swyddfa'r Post Felinfach, Felinfach, Llanbedr Pont Steffan SA48 8AE. Gallwch anfon gwrthwynebiadau, gan nodi'r rhesymau yn ysgrifenedig, at [cllc@ceredigion.gov.uk](mailto:cllc@ceredigion.gov.uk) neu i'r Gwasanaethau Cyfreithiol, drwy law Ystafell y Post, Cyngor Sir Ceredigion, Canolfan Rheidol, Rhodfa Padarn, Llanbadarn Fawr, Aberystwyth, Ceredigion, SY23 3UE i gyrraedd erbyn 05/06/2024.

The Council proposes to make the Ceredigion County Council (Prohibition and Restriction of Waiting and Loading and Unloading) Order 2019 (Felinfach) (Amendment Order No.12) 2024. This will introduce a new Prohibition of Waiting At Any Time on both sides of the A482 from 1.75m north of the southern boundary of the property known as Henllan southwards to 8m south of the existing southern terminal point of the 20mph limit. Details may be inspected online at <https://www.ceredigion.gov.uk/resident/travel-roads-parking/consultations/orders/> and at Felinfach Post Office, Felinfach, Lampeter SA48 8AE. Objections, stating reasons in writing, to [cllc@ceredigion.gov.uk](mailto:cllc@ceredigion.gov.uk) or Legal Services, c/o Postroom, Ceredigion County Council, Canolfan Rheidol, Rhodfa Padarn, Llanbadarn Fawr, Aberystwyth, Ceredigion, SY23 3UE to be received by 05/06/2024.