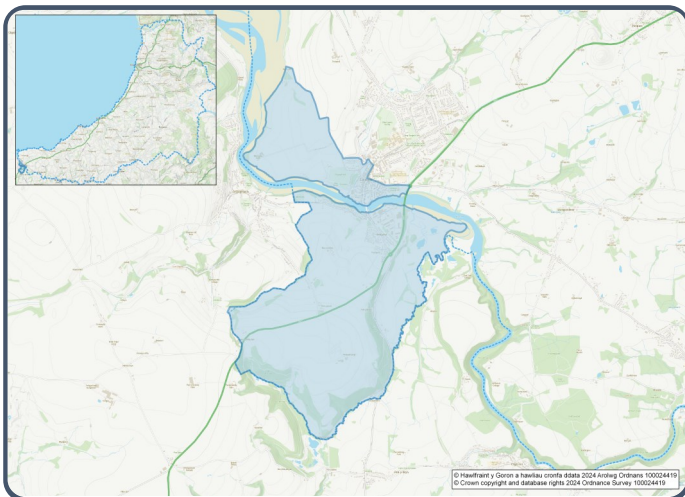


2021 Census Area Profiles – Lower Super Output Area (LSOA) W01000511 - Cardigan - Teifi



Population:



1,174 residents



Females

572



Males

602

**Population Change
(2011-2021)**

0.0%

**70
Students**

(people over 16 who are engaged in full-time courses of study in secondary, tertiary or higher education institutions)

19.4% aged 0 - 14

65.7% aged 15 - 64

14.9% aged 65+

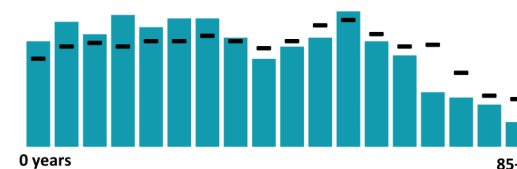
3.8% BAME

94.4% White

1.8% Other Ethnic Group

Age profile

■ Cardigan - Teifi - Wales



Health & Disability:



27.4%

Disabled under the Equality Act



13.8%

Day-to-day activities limited a lot



74.2%

In good or very good health



11.6%

Provides unpaid care

Households:



557

Households



2.7%

Households without central heating



64.3%

Households deprived in one or more deprivation dimensions



3.4% Overcrowded Households

Welsh Language:



41.4%

Can speak Welsh

Age breakdown of Welsh speakers

0-15: 12.1%

16-64: 22.5%

65+: 5.5%



42.6%

Have NO skills in Welsh

Economy:



51.7%

Employment Rate



18.6%

Achieving level 2 qualification



46.6%

Economic Inactivity



20.9%

No Qualifications

Demography, Ethnicity, Identity & Religion:

	LSOA		Ceredigion
	No.	%	%
Population			
Population 2021	1,174	-	71,475
Population 2011	1,174	-	75,922
Population change (2011-21)	0	0.0%	- 5.8%
Population density	246.3	-	40.0
Sex			
Males	602	51.3%	48.9%
Females	572	48.7%	51.1%
Age			
Aged 0 to 4	70	6.0%	3.8%
Aged 5 to 19	246	20.9%	16.1%
Aged 20 to 29	166	14.1%	14.0%
Aged 30 to 44	218	18.5%	13.8%
Aged 45 to 59	230	19.6%	19.3%
Aged 60 to 64	71	6.0%	7.2%
Aged 65 to 74	97	8.2%	13.9%
Aged 75 and over	78	6.6%	11.8%
Country of birth			
Born in UK	1,098	93.5%	92.9%
Born outside of UK	76	6.5%	7.1%
National Identity			
One or more UK identity	1,104	94.1%	93.4%
UK identity and non-UK identity	17	1.4%	1.7%
Non-UK identity	52	4.4%	4.9%
Religion			
Christian	378	32.3%	46.7%
No religion	668	57.0%	43.0%
Other religion	56	4.8%	2.6%

Housing & Household Composition:

	LSOA		Ceredigion
	No	%	%
Tenure			
Owned	218	39.1%	68.6%
Private rented	195	34.9%	20.6%
Social rented	141	25.3%	10.5%
Shared ownership	3	0.5%	0.3%
Lives rent free	1	0.2%	0.0%
Accommodation Type			
Detached	96	17.2%	50.7%
Semi detached	162	29.1%	23.1%
Terraced	148	26.6%	14.1%
Flat, maisonette or apartment	150	26.9%	11.3%
Caravan or other mobile temporary	1	0.2%	0.8%
Household composition			
One person household	247	44.4%	33.0%
Single family household	281	50.5%	60.4%
Other household types	28	5.0%	6.6%
Central Heating			
No central heating	15	2.7%	2.6%
Occupancy Rating			
Overcrowded households	19	3.4%	1.4%
Number of bedrooms			
1 bedroom	101	18.1%	7.4%
2 bedrooms	174	31.2%	23.6%
3 bedrooms	207	37.2%	42.5%
4+ bedrooms	75	13.5%	26.5%
Number of cars or vans			
No car or van	191	34.3%	15.7%
Deprivation			
Households deprived in one or more deprivation dimensions	358	64.3%	52.9%

Labour Market & Education:

	LSOA		Ceredigion
	No	%	%
Economic activity status			
Economically active (in employment)	437	46.9%	46.8%
Economically active (unemployed)	44	4.7%	1.8%
Economically inactive	434	46.6%	47.9%
<i>Retired</i>	154	16.5%	27.7%
<i>Student</i>	61	6.6%	10.0%
<i>Looking after home or family</i>	74	7.9%	3.5%
<i>Long-term sick or disabled</i>	95	10.2%	4.4%
Top 3 Industries			
Distribution, hotels and restaurants	129	28.9%	21.8%
Public administration, education and health	118	26.4%	35.1%
Financial, real estate, professional and administrative activities	52	11.6%	10.5%
Education			
No Qualifications (all aged 16+)	194	20.9%	14.7%
Qualifications Level 2	173	18.6%	13.7%
Apprenticeship	53	5.7%	5.4%
Travel to Work			
Work mainly at/from home	101	22.5%	31.6%
Driving car/van	205	45.7%	51.1%
Bus	10	2.2%	1.3%
On foot	88	19.6%	10.0%