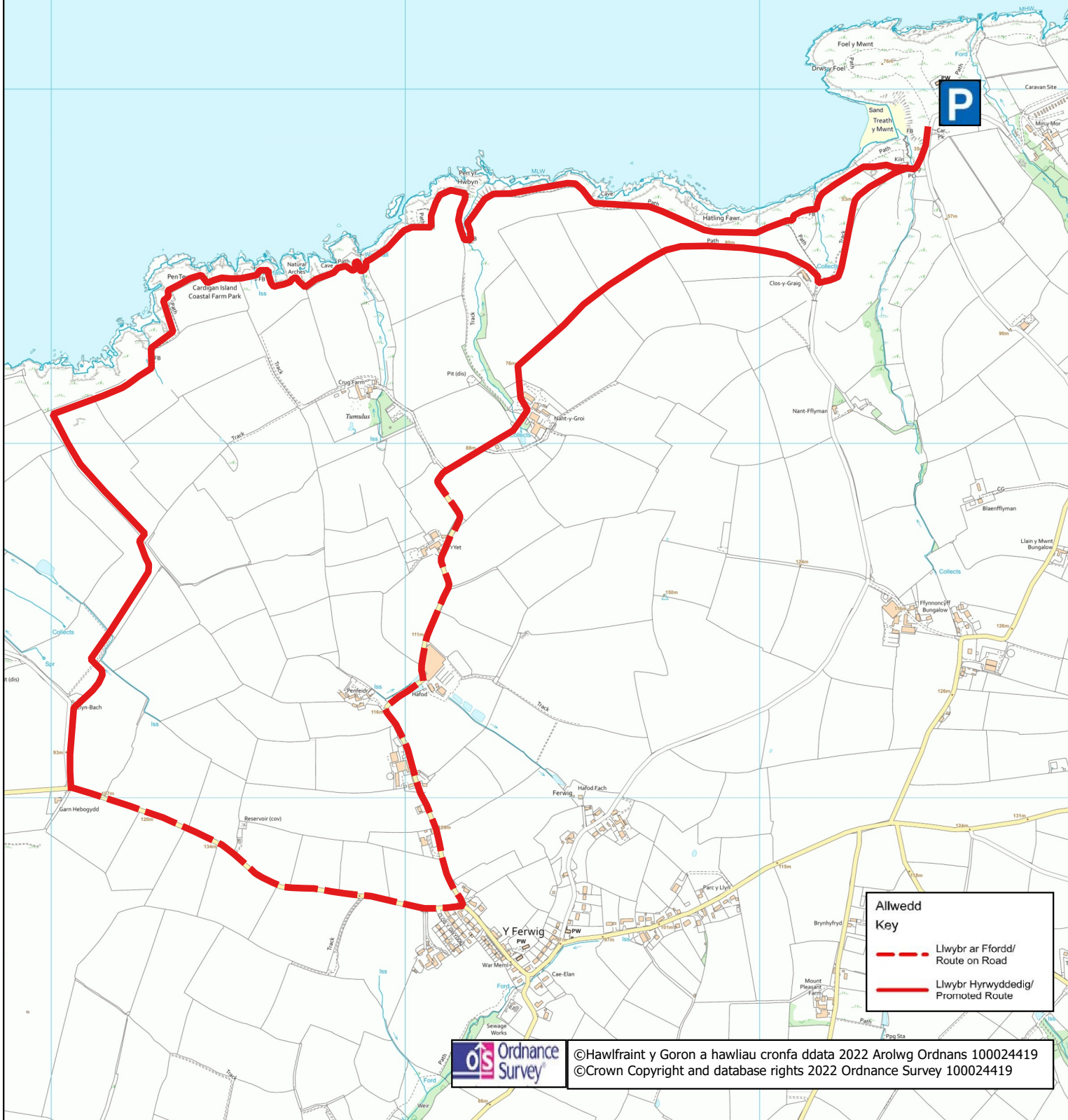


# Cyngor Sir Ceredigion

## Ceredigion County Council





### Cylchdaith Mwnt Ferwig Circular

Dechrau: Maes Parcio yr Ymddiriodolaeth  
Mwnt

Addas ar gyfer: Cerddwyr

Arwyneb: Llwybr yr Arfordir, Ffordd, Trac  
Dodrefn: 7 gât, 3 bont, stepiau

Pellter: 9.4 km / 5.8 milltir

Parcio: Maes parcio yr Ymddiriodolaeth  
Mwnt

Trafnidiaeth: Cardi Bach 552

Cyfleusterau: Toiledau, Cafe

Mapiau: OS Explorer 198  
OS Landranger 145

Start: At the National Trust Car Park  
Mwnt

Suitable for: Walkers

Surface: Coast Path, Road, Track  
Furniture: 7 gates, 3 bridges, steps

Distance: 9.4 km / 5.8 miles

Parking: At National Trust Car Park  
Mwnt

Public Transport: Cardi Bach 552

Amenities: Toilets, Cafe

Maps: OS Explorer 198  
OS Landranger 145

Gellir adrodd unrhyw broblemau y dewch ar eu traws ar Llwybrau Tramwy trwy dudalen "Adrodd Problemau" y Cyngor ar [www.ceredigion.gov.uk](http://www.ceredigion.gov.uk)

Any problems encountered on Rights of Way can be logged on the County Council's "Problem Reporting page" at [www.ceredigion.gov.uk](http://www.ceredigion.gov.uk)



Dilynwch Cod Cefn Gwlad bob amser.  
Gwelwch  
[www.cyfoethnaturiolcymru.gov.uk](http://www.cyfoethnaturiolcymru.gov.uk)

Always follow the Countryside Code,  
which can be found at  
[www.naturalresourceswales.gov.uk](http://www.naturalresourceswales.gov.uk)

