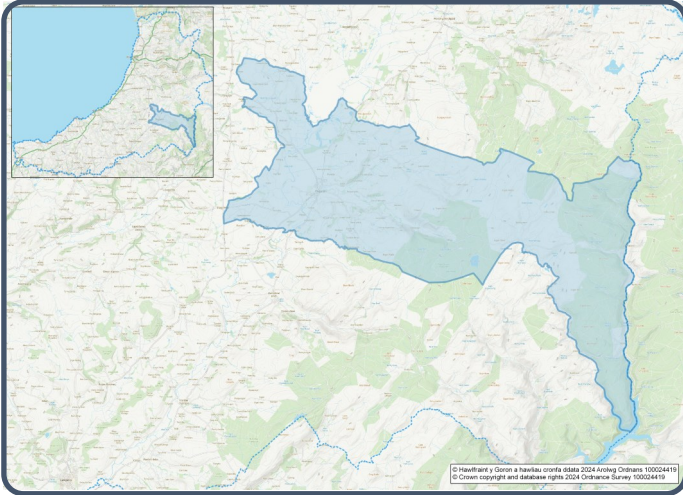


2021 Census Area Profiles – Lower Super Output Area (LSOA)

W01000550 - Tregaron



Population:



1,154 residents



Females
608



Males
546

Population Change (2011-2021)

-4.9%

46 Students

(people over 16 who are engaged in full-time courses of study in secondary, tertiary or higher education institutions)

14.0% aged 0 - 14

55.4% aged 15 - 64

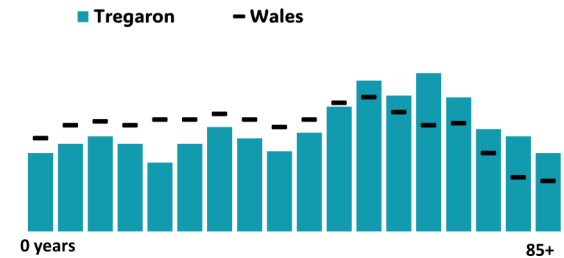
30.6% aged 65+

Age profile

1.7% BAME

98.3% White

0.0% Other Ethnic Group



Health & Disability:



22.6%

Disabled under the Equality Act



10.4%

Day-to-day activities limited a lot



76.9%

In good or very good health



10.6%

Provides unpaid care

Households:



532 Households



1.5%

Households without central heating



55.1%

Households deprived in one or more deprivation dimensions



1.5% Overcrowded Households

Welsh Language:



58.7%
Can speak Welsh

Age breakdown of Welsh speakers

0-15: 10.0%

16-64: 31.4%

65+: 16.0%



29.8%
Have NO skills in Welsh

Economy:



52.2%
Employment Rate



15.8%
Achieving level 2 qualification



46.4%
Economic Inactivity



18.8%
No Qualifications

Demography, Ethnicity, Identity & Religion:

	LSOA		Ceredigion
	No.	%	%
Population			
Population 2021	1,154	-	71,475
Population 2011	1,213	-	75,922
Population change (2011-21)	- 59	- 4.9%	- 5.8%
Population density	13.4	-	40.0
Sex			
Males	608	52.7%	48.9%
Females	546	47.3%	51.1%
Age			
Aged 0 to 4	49	4.2%	3.8%
Aged 5 to 19	167	14.5%	16.1%
Aged 20 to 29	97	8.4%	14.0%
Aged 30 to 44	173	15.0%	13.8%
Aged 45 to 59	231	20.0%	19.3%
Aged 60 to 64	84	7.3%	7.2%
Aged 65 to 74	181	15.7%	13.9%
Aged 75 and over	172	14.9%	11.8%
Country of birth			
Born in UK	1,125	97.4%	92.9%
Born outside of UK	30	2.6%	7.1%
National Identity			
One or more UK identity	1,141	98.9%	93.4%
UK identity and non-UK identity	4	0.3%	1.7%
Non-UK identity	9	0.8%	4.9%
Religion			
Christian	585	50.7%	46.7%
No religion	476	41.2%	43.0%
Other religion	11	1.0%	2.6%

Housing & Household Composition:

	LSOA		Ceredigion
	No	%	%
Tenure			
Owned	380	71.4%	68.6%
Private rented	101	19.0%	20.6%
Social rented	51	9.6%	10.5%
Shared ownership	0	0.0%	0.3%
Lives rent free	0	0.0%	0.0%
Accommodation Type			
Detached	284	53.4%	50.7%
Semi detached	158	29.7%	23.1%
Terraced	68	12.8%	14.1%
Flat, maisonette or apartment	22	4.1%	11.3%
Caravan or other mobile temporary	0	0.0%	0.8%
Household composition			
One person household	190	35.7%	33.0%
Single family household	322	60.5%	60.4%
Other household types	20	3.8%	6.6%
Central Heating			
No central heating	8	1.5%	2.6%
Occupancy Rating			
Overcrowded households	8	1.5%	1.4%
Number of bedrooms			
1 bedroom	21	3.9%	7.4%
2 bedrooms	116	21.8%	23.6%
3 bedrooms	272	51.1%	42.5%
4+ bedrooms	123	23.1%	26.5%
Number of cars or vans			
No car or van	76	14.3%	15.7%
Deprivation			
Households deprived in one or more deprivation dimensions	293	55.1%	52.9%

Labour Market & Education:

	LSOA		Ceredigion
	No	%	%
Economic activity status			
Economically active (in employment)	489	49.5%	46.8%
Economically active (unemployed)	27	2.7%	1.8%
Economically inactive	458	46.4%	47.9%
<i>Retired</i>	313	31.7%	27.7%
<i>Student</i>	33	3.3%	10.0%
<i>Looking after home or family</i>	41	4.1%	3.5%
<i>Long-term sick or disabled</i>	48	4.9%	4.4%
Top 3 Industries			
Public administration, education and health	180	35.9%	35.1%
Distribution, hotels and restaurants	101	20.2%	21.8%
Financial, real estate, professional and administrative activities	60	12.0%	10.5%
Education			
No Qualifications (all aged 16+)	185	18.8%	14.7%
Qualifications Level 2	155	15.8%	13.7%
Apprenticeship	60	6.1%	5.4%
Travel to Work			
Work mainly at/from home	118	23.7%	31.6%
Driving car/van	289	58.1%	51.1%
Bus	11	2.2%	1.3%
On foot	54	10.9%	10.0%