

# Ceredigion Community Safety Partnership



## Crime and Disorder Strategic Assessment 2023

Young Person Version

The Ceredigion Community Safety Partnership **want to hear your thoughts on crime and disorder** across the county through this survey.

You can learn more about the work of the Community Safety Partnership (CSP) on the next page.

You will need to respond to this survey by **midday on 28 March 2023**.

You can send it back to the address at the end of the form, by returning it to your local Library or by sending it to

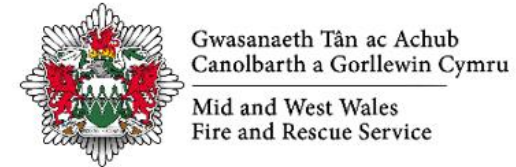
[partnerships@ceredigion.gov.uk](mailto:partnerships@ceredigion.gov.uk)

You can also reply online by clicking [here](#).



# Who is part of the Ceredigion Community Safety Partnership (CSP)?

Members of the Partnership are senior people who work in:



**The CSP work together to protect local communities from crime and to help people feel safer.** An important part of this work is to identify current issues and potential future threats that may affect Ceredigion. The answers given in response to this survey will tell us what worries people the most in terms of crime in Ceredigion. This will help us to plan and decide which activities should be prioritised.

# Crime and Disorder Survey

## Question 1: Tell us about your connection to Ceredigion.

- I live here.
- I work here.
- I live here and I work here.
- I am a student.
- I represent a Town or Community Council.



## Question 2: Which of these areas do you identify with the most?

- Aberystwyth
- Tregaron
- Aberaeron
- Lampeter
- Cardigan
- Llandysul



### Question 3: We want to know which of these issues are most important to you.



Very important    A bit important    Not important

**Anti-social behaviour:**

*A person acts in a way which upsets someone who does not live with them.*

**Visible Police Presence (Town and Rural):**

*Seeing police officers in your area.*

**Substance Misuse (Drugs):**

*Using illegal drugs or medicine in a way that they are not meant to be used.*

**Illegal Supply of Drugs:**

*Giving or offering to give someone illegal drugs.*

**Substance Misuse (Alcohol):**

*Drinking alcohol in a way that is harmful.*

**Road Safety & Reducing Road Traffic Fatalities:**

*Teaching people how to behave safely when driving on or crossing the road.*

**Youth Offending – Protecting Young People:**

*Work with young people that get into trouble with the law and help them stay away from crime.*

**Vandalism, Criminal Damage and Graffiti:**

*When a person causes damage to something on purpose without permission.*

### Question 3: We want to know which of these issues are most important to you.

(Continued...)



Very important    A bit important    Not important

**Violent Crime:**

*When a person uses violence or threatens to hurt someone in order to commit a crime.*

**Street Lighting:**

*Having lights by the side of the road or path when it's dark.*

**Vehicle Crime:**

*Stealing a vehicle, stealing something from a vehicle or causing damage to a vehicle.*

**Burglary:**

*Going into a building without permission to steal something.*

**Public Engagement and Media Influence:**

*Involving the public and sharing information to reduce crime.*

**Fear of Terrorism:**

*Violence or threats carried out by a person or group with a strong political opinion.*

**Public Order:**

*Making sure people behave properly in public.*

### Question 3: We want to know which of these issues are most important to you.

(Continued...)



Very important      A bit important      Not important

**Arson and Deliberate Fires:**

*Starting a fire on purpose to damage something.*

**Reducing Business Crime:**

*When a business or person as part of their work is a victim of crime.*

**Rural Crime:**

*Crime and anti-social behaviour which happens in rural areas.*

**Violence Against Women and Girls:**

*Violence against females including physical, sexual or mental harm.*

**Domestic Abuse (including Stalking and Harassment):**

*Where a person controls, threatens or is violent to someone who lives with them.*

**Sexual Offences:**

*A sexual act directed at someone without the other person agreeing to it.*

**Hate Crime:**

*Crimes targeted at a person because of their race, religion, disability, sexuality or gender identity.*

### Question 3: We want to know which of these issues are most important to you.

(Continued...)



Very important    A bit important    Not important

**Community Cohesion and Engagement, Reducing the Fear of Crime:**

*Different groups in the community coming together.*

**Reducing Reoffending:**

*Work with people who are in prison to help them stay away from crime when they come out.*

**Cyber & Online Crime:**

*Using a computer to carry out criminal activity.*

### Question 4: Tick the issues you think that have improved over the past 12 months.

- Anti-social behaviour
- Visible Police Presence (Town and Rural)
- Substance Misuse (Drugs)
- Targeting the Illegal Supply of Drugs
- Substance Misuse (Alcohol)



**Question 4: Tick the issues you think that have improved over the past 12 months.**  
**(Continued)**

- Road Safety & Reducing Road Traffic Fatalities
- Youth Offending – Protecting Young People
- Vandalism, Criminal Damage and Graffiti
- Violent Crime
- Street Lighting
- Vehicle Crime
- Burglary
- Public Engagement and Media Influence
- Fear of Terrorism
- Public Order
- Arson and Deliberate Fires
- Reducing Business Crime
- Rural Crime
- Violence Against Women and Girls
- Domestic Abuse (inc. Stalking and Harassment)
- Sexual Offences





**Question 4: Tick the issues you think that have improved over the past 12 months.**

**(Continued)**

- Hate Crime
- Community Cohesion and Engagement, Reducing the Fear of Crime
- Reducing Reoffending
- Cyber & Online Crime



**Question 5: Tick the issues you think that have got worse over the past 12 months.**

- Anti-social behaviour
- Visible Police Presence (Town and Rural)
- Substance Misuse (Drugs)
- Illegal Supply of Drugs
- Substance Misuse (Alcohol)
- Road Safety & Reducing Road Traffic Fatalities
- Youth Offending – Protecting Young People
- Vandalism, Criminal Damage and Graffiti



**Question 5: Tick the issues you think that have got worse over the past 12 months.**  
**(Continued)**

- Violent Crime
- Street Lighting
- Vehicle Crime
- Burglary
- Public Engagement and Media Influence
- Fear of Terrorism
- Public Order
- Arson and Deliberate Fires
- Reducing Business Crime
- Rural Crime
- Violence Against Women and Girls
- Domestic Abuse (inc. Stalking and Harassment)
- Sexual Offences
- Hate Crime



**Question 5: Tick the issues you think that have got worse over the past 12 months.**  
**(Continued)**

- Community Cohesion and Engagement, Reducing the Fear of Crime
- Reducing Reoffending
- Cyber & Online Crime



**Question 6: Has the amount of crime in your area changed over the last 12 months?**

- A lot more crime
- A little more crime
- About the same amount of crime
- A little less crime
- A lot less crime



**Question 7: Tell us about any new issues that we should be aware of.**

---

---

---

**Question 8: Do you think that alcohol abuse is a big problem in relation to crime in Ceredigion?**

- Yes  
 No



**Question 9: Do you think that drug abuse is a big problem in relation to crime in Ceredigion?**

- Yes  
 No



**Question 10: Do you know how to report Anti-social behaviour, and the ways it can be dealt with?**

- Yes  
 No



**Question 11: Have you been a victim of cyber or online crime?**



- Yes
- No

**Question 12: What do you think might make you feel unsafe in your home?**

**[such as online crime, burglary, criminal damage]**

---

---

---

**Question 13: Have you heard about the work of the Ceredigion Community Safety Partnership?**



- Yes
- No

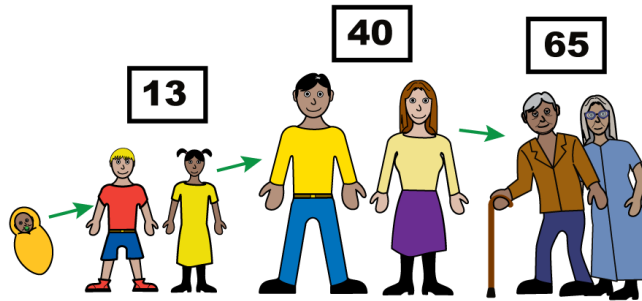
**Question 14: Are there any other concerns that you would like to raise?**

---

---

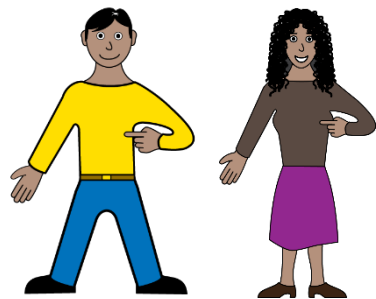
---

The next questions are about you. You don't have to answer them. They help us to understand if our survey has reached the right people.



Please write your age here:

\_\_\_\_\_  
Leave blank if you prefer not to say.



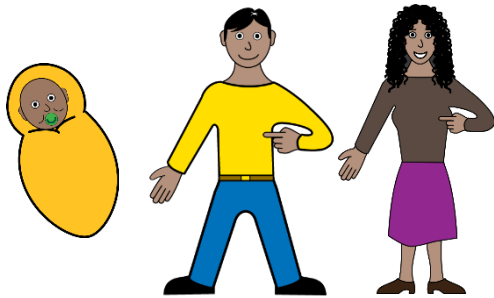
**I am...**

Male

Female

If you use a different word to describe yourself, please say what this is. \_\_\_\_\_

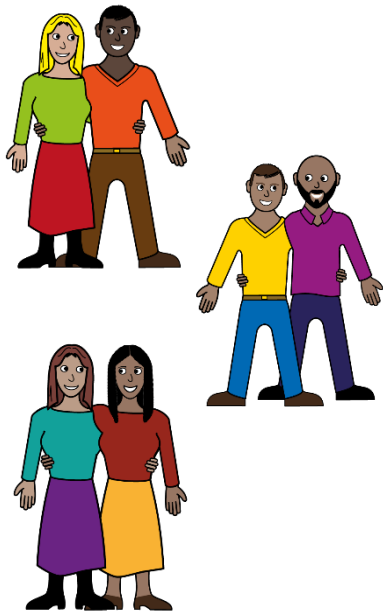
Leave blank if you prefer not to say.



Is your gender now the same as it was when you were born?

---

Leave blank if you prefer not to say.



**I am...**

Heterosexual / Straight

Gay

Bisexual

If you use a different word to describe yourself, please say what this is.

---

Leave blank if you prefer not to say.



### National Identity: Are you...?

Welsh

English

Scottish

Northern Irish

Irish

British

Prefer not to say

If you use a different word to describe yourself, please say what this is.

---



### Race: Are you?

Asian

Black / African / Caribbean

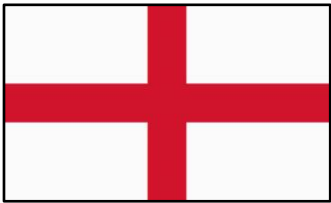
Gypsy Traveller

Mixed

White

If you use a different word to describe yourself, please say what this is. \_\_\_\_\_





**Language: What is your preferred language?**

Welsh

English

Other

Prefer not to say

If you prefer to use a different language, please say what this is.

\_\_\_\_\_

**Language: Can you understand, speak, read or write Welsh?**

Understand spoken Welsh

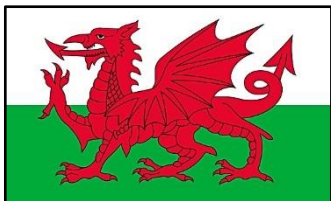
Speak Welsh

Read Welsh

Write Welsh

None of the above

Prefer not to say





**Are you a disabled person? If yes, tick any of the boxes that says more about you.**

Hearing difficulties

Sight difficulties

Speaking difficulties

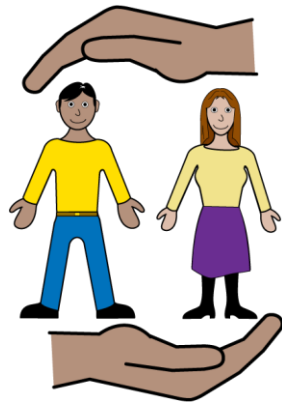
Learning difficulties

Mental health condition

Physical disability

Please tell us here if you prefer to use your own words.

---

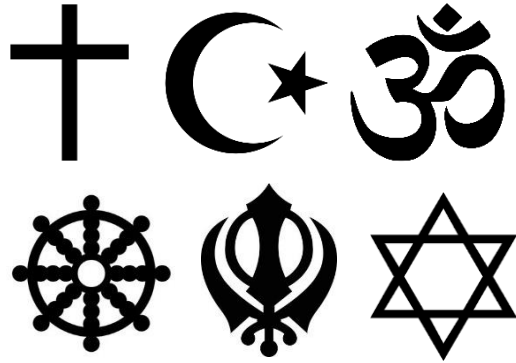


**Are you a Young Carer?**

Yes

No

A Young Carer looks after a friend or someone in their family. This may be because they are disabled or have a long illness or have problems because of their age.



**What is your religion?**

Please say if you do not have a religion.

---



We will only use your information for this survey. We will not share it without your permission.

We follow a law called the General Data Protection Regulation (GDPR) to keep your information safe.

We will keep your personal information for 1 year.

For more information about how we keep your information please read privacy policy here:

[www.ceredigion.gov.uk/your-council/strategies-plans-policies/data-protection-and-gdpr-policy/](http://www.ceredigion.gov.uk/your-council/strategies-plans-policies/data-protection-and-gdpr-policy/)

# Thank you.

Your answers will help the Community Safety Partnership to keep Ceredigion safe.



**Contact us:**

**Post:**

Ceredigion Community Safety  
Partnership  
Canolfan Rheidol  
Rhodfa Padarn  
Llanbadarn Fawr  
Aberystwyth  
Ceredigion  
SY23 3UE

**Phone:**

01545 570881

**Email:**

partnerships@ceredigion.gov.uk

**Further Information:**

<http://www.ceredigion.gov.uk/your-council/consultations/crime-and-disorder-strategic-assessment-questionnaire/>

*Acknowledgements:*

Pictures by Freepik.com  
Easy Read Symbols Copyright Leeds and  
York Partnership NHS Foundation Trust.