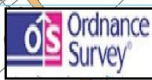


Cyngor Sir Ceredigion Ceredigion County Council

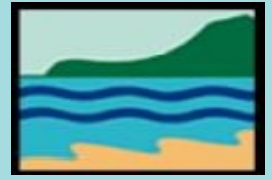


Allwedd
Key

- Llwybr ar Ffordd/
Route on Road
- Llwybr Hyrwyddedig/
Promoted Route



©Hawlfraint y Goron a hawliau cronfa ddata 2022 Arolwg Ordnans 100024419
©Crown Copyright and database rights 2022 Ordnance Survey 100024419



Cylchdaith Tresaith-Penbryn Circular

Dechrau: Tresaith neu Penbryn

Start: Tresaith or Penbryn

Addas ar gyfer: Cerddwyr

Suitable for: Walkers

Arwyneb: Llwybwr Arfordir, Porfa, Trac,
Ffordd

Surface: Coastal Path, Grass, Track,
Road

Dodrefn: 8 gât, 2 sticil, stepiau

Furniture: 8 gates, 2 stiles, steps

Pellter: 7.7 km / 4.8 milltir

Distance: 7.7 km / 4.8 miles

Parcio: Maes Parcio Tresaith neu Penbryn

Parking: Car Park Tresaith or Penbryn

Cyfleusterau: Siop, Caffi, Tafarnau, Toiledau,

Amenities: Shop, Cafe, Pub, Toilets

Trafnidiaeth: 554 o Aberteifi

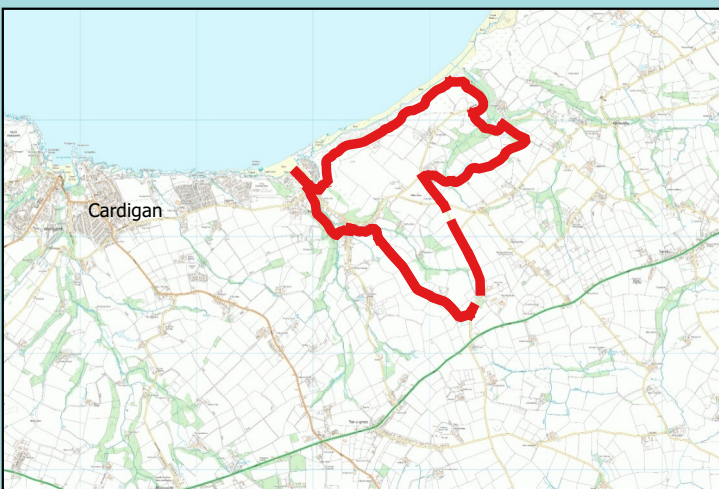
Public Transport: 554 from Cardigan

Mapiau: OS Explorer 198
OS Landranger 145

Maps: OS Explorer 198
OS Landranger 145

Gellir adrodd unrhyw broblemau y dewch ar eu traws ar
Llwybrau Tramwy trwy dudalen "Adrodd Problemau" y
Cyngor ar www.ceredigion.gov.uk

Any problems encountered on Rights of Way can be
logged on the County Council's "Problem Reporting
page" at www.ceredigion.gov.uk



Dilynwch Cod Cefn Gwlad bob amser.
Gwelwch
www.cyfoethnaturiolcymru.gov.uk

Always follow the Countryside Code,
which can be found at
www.naturalresourceswales.gov.uk

