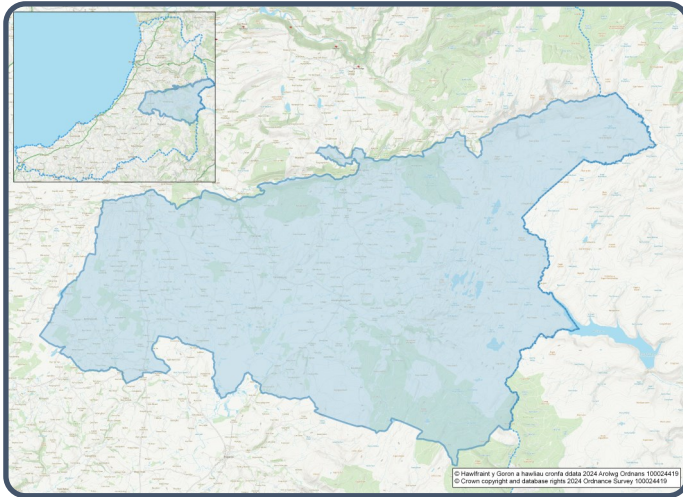


2021 Census Area Profiles – Lower Super Output Area (LSOA)

W01000542 - Lledrod



Population:



2,204 residents



Females
1,105



Males
1,099

Population Change (2011-2021)

▼ **-0.2%**

91 Students

(people over 16 who are engaged in full-time courses of study in secondary, tertiary or higher education institutions)

13.7% aged 0 - 14

59.8% aged 15 - 64

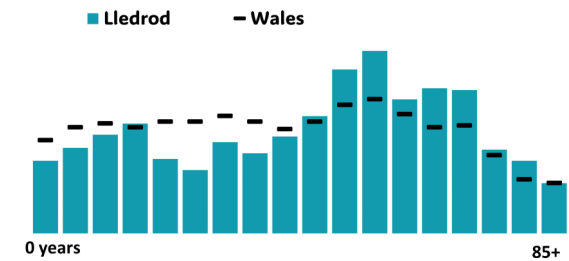
26.5% aged 65+

Age profile

1.2% BAME

98.7% White

0.1% Other Ethnic Group



Health & Disability:



21.4%

Disabled under the Equality Act



9.4%

Day-to-day activities limited a lot



80.0%

In good or very good health



13.2%

Provides unpaid care

Households:



956 Households



4.5%

Households without central heating



53.2%

Households deprived in one or more deprivation dimensions



1.6% Overcrowded Households

Welsh Language:



50.2%
Can speak Welsh

Age breakdown of Welsh speakers

0-15: 10.1%

16-64: 28.2%

65+: 10.8%



40.6%

Have NO skills in Welsh

Economy:



54.5%
Employment Rate



14.2%
Achieving level 2 qualification



44.5%
Economic Inactivity



16.5%
No Qualifications

Demography, Ethnicity, Identity & Religion:

	LSOA		Ceredigion
	No.	%	%
Population			
Population 2021	2,204	-	71,475
Population 2011	2,209	-	75,922
<i>Population change (2011-21)</i>	- 5	- 0.2%	- 5.8%
Population density	9.9	-	40.0
Sex			
Males	1,099	49.9%	48.9%
Females	1,105	50.1%	51.1%
Age			
Aged 0 to 4	85	3.9%	3.8%
Aged 5 to 19	348	15.8%	16.1%
Aged 20 to 29	162	7.3%	14.0%
Aged 30 to 44	318	14.4%	13.8%
Aged 45 to 59	550	24.9%	19.3%
Aged 60 to 64	158	7.2%	7.2%
Aged 65 to 74	341	15.5%	13.9%
Aged 75 and over	243	11.0%	11.8%
Country of birth			
Born in UK	2,112	95.8%	92.9%
Born outside of UK	92	4.2%	7.1%
National Identity			
One or more UK identity	2,107	95.4%	93.4%
UK identity and non-UK identity	39	1.8%	1.7%
Non-UK identity	62	2.8%	4.9%
Religion			
Christian	1,090	49.5%	46.7%
No religion	903	41.0%	43.0%
Other religion	45	2.0%	2.6%

Housing & Household Composition:

	LSOA		Ceredigion
	No	%	%
Tenure			
Owned	766	80.1%	68.6%
Private rented	141	14.7%	20.6%
Social rented	45	4.7%	10.5%
Shared ownership	4	0.4%	0.3%
Lives rent free	0	0.0%	0.0%
Accommodation Type			
Detached	657	68.9%	50.7%
Semi detached	170	17.8%	23.1%
Terraced	108	11.3%	14.1%
Flat, maisonette or apartment	14	1.5%	11.3%
Caravan or other mobile temporary	5	0.5%	0.8%
Household composition			
One person household	271	28.3%	33.0%
Single family household	635	66.4%	60.4%
Other household types	50	5.2%	6.6%
Central Heating			
No central heating	43	4.5%	2.6%
Occupancy Rating			
Overcrowded households	15	1.6%	1.4%
Number of bedrooms			
1 bedroom	26	2.7%	7.4%
2 bedrooms	216	22.7%	23.6%
3 bedrooms	432	45.3%	42.5%
4+ bedrooms	279	29.3%	26.5%
Number of cars or vans			
No car or van	75	7.8%	15.7%
Deprivation			
Households deprived in one or more deprivation dimensions	508	53.2%	52.9%

Labour Market & Education:

	LSOA		Ceredigion
	No	%	%
Economic activity status			
Economically active (in employment)	990	52.7%	46.8%
Economically active (unemployed)	34	1.8%	1.8%
Economically inactive	835	44.5%	47.9%
<i>Retired</i>	540	28.8%	27.7%
<i>Student</i>	74	3.9%	10.0%
<i>Looking after home or family</i>	80	4.3%	3.5%
<i>Long-term sick or disabled</i>	81	4.3%	4.4%
Top 3 Industries			
Public administration, education and health	349	34.5%	35.1%
Distribution, hotels and restaurants	181	17.9%	21.8%
Agriculture, energy and water	141	13.9%	9.0%
Education			
No Qualifications (all aged 16+)	309	16.5%	14.7%
Qualifications Level 2	266	14.2%	13.7%
Apprenticeship	105	5.6%	5.4%
Travel to Work			
Work mainly at/from home	423	42.0%	31.6%
Driving car/van	510	50.7%	51.1%
Bus	10	1.0%	1.3%
On foot	21	2.1%	10.0%