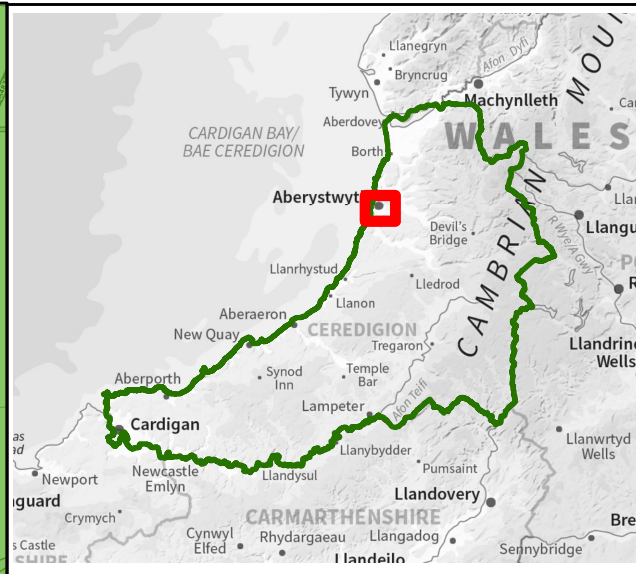
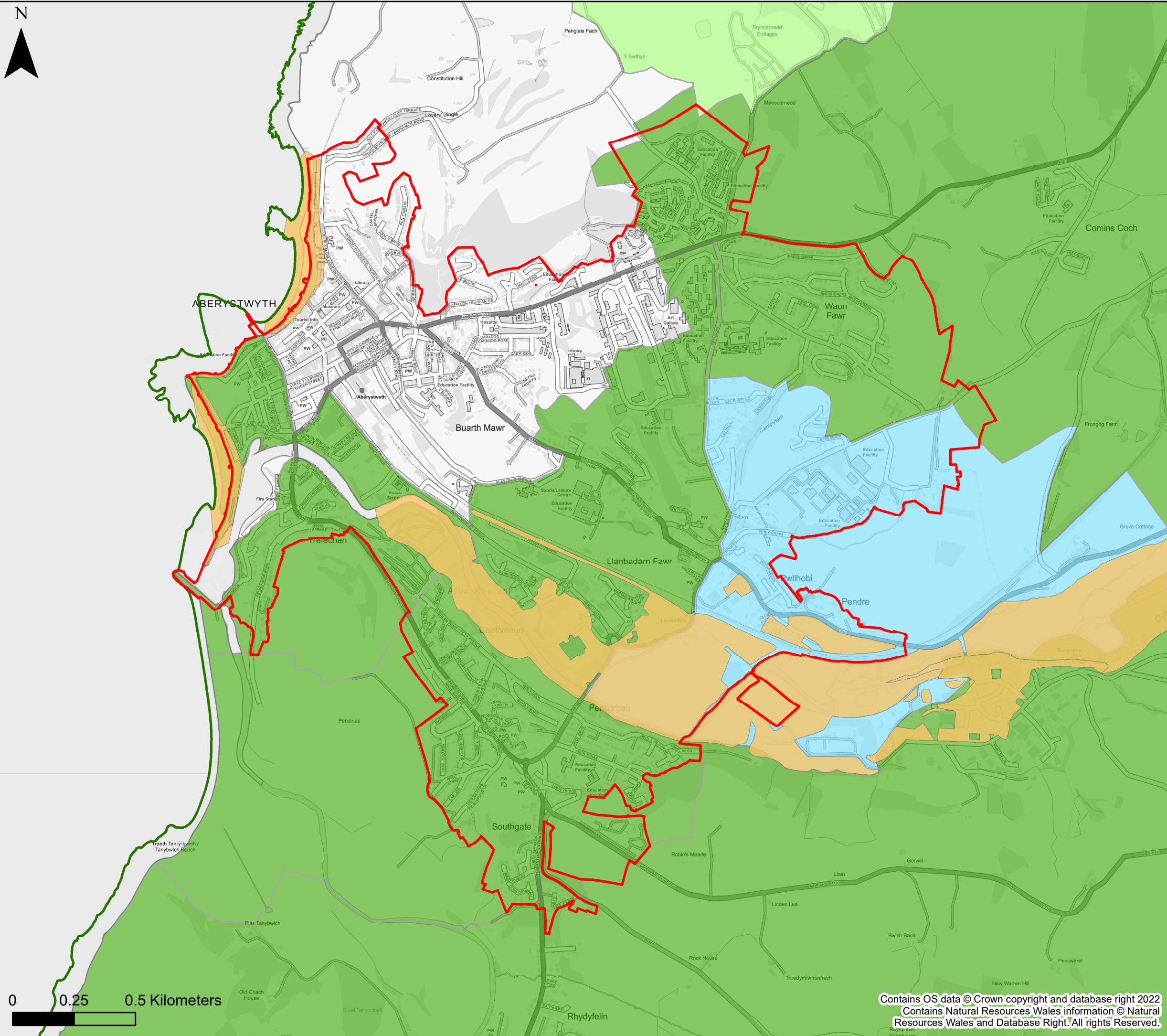




0 0.25 0.5 Kilometers



**KEY**

- Ceredigion County Council
  - Settlement Boundary
  - NRW Recorded Flood Extents
- Number of sewer flooding incidents by ward
- |  |         |  |       |
|--|---------|--|-------|
|  | No data |  | 10-25 |
|  | 1 - 5   |  | 25-30 |
|  | 5-10    |  | >30   |

**Notes**  
 If no data is displayed on the map, or not all features are present, this indicates that the respective flood source or features are not present within this area.  
 Sewer flooding data has been supplied by Dŵr Cymru Welsh Water.



**Ceredigion County Council  
 Stage 1 Strategic Flood  
 Consequences Assessment  
 Historic Flooding**

**Settlement Area- Aberystwyth, Llanbadarn Fawr**

This document is the property of Jeremy Benn Associates Ltd. It shall not be reproduced in whole or in part, nor disclosed to a third party, without the permission of Jeremy Benn Associates Ltd.

Drawn	HB	28/10/2022
Checked	CB	07/11/2022
Approved	GB	08/11/2022