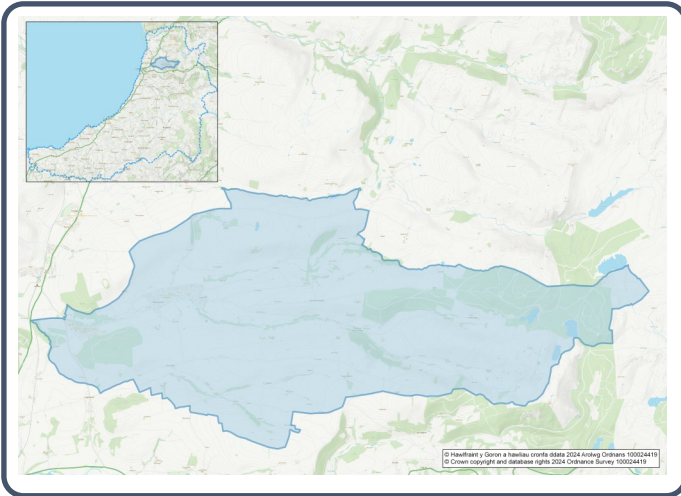


2021 Census Area Profiles – Lower Super Output Area (LSOA) W01000549 - Trefeurig



Population:


1,774 residents


Females
914


Males
860

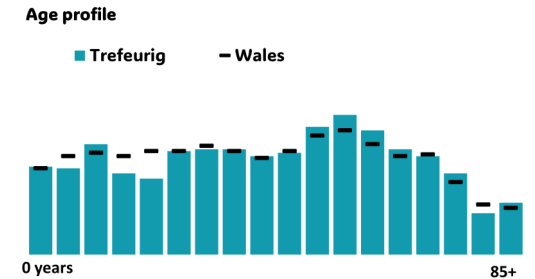
Population Change
(2011-2021)
▲ **+0.2%**

76
Students

(people over 16 who are engaged in full-time courses of study in secondary, tertiary or higher education institutions)


16.5% aged 0 - 14
61.7% aged 15 - 64
21.9% aged 65+


3.0% BAME
96.7% White
0.2% Other Ethnic Group



Health & Disability:


16.2%
Disabled under the Equality Act



6.4%
Day-to-day activities limited a lot


83.6%
In good or very good health


9.5%
Provides unpaid care

Households:



770
Households


2.5%
Households without central heating


43.4%
Households deprived in one or more deprivation dimensions


1.6% Overcrowded Households

Welsh Language:


52.8%
Can speak Welsh

Age breakdown of Welsh speakers
0-15: **10.3%**
16-64: **30.8%**
65+: **9.9%**


32.4%
Have NO skills in Welsh

Economy:


61.0%
Employment Rate


15.8%
Achieving level 2 qualification


37.8%
Economic Inactivity


11.5%
No Qualifications

Demography, Ethnicity, Identity & Religion:

	LSOA		Ceredigion
	No.	%	%
Population			
Population 2021	1,774	-	71,475
Population 2011	1,771	-	75,922
<i>Population change (2011-21)</i>	+3	+0.2%	- 5.8%
Population density	67.8	-	40.0
Sex			
Males	860	48.5%	48.9%
Females	914	51.5%	51.1%
Age			
Aged 0 to 4	90	5.1%	3.8%
Aged 5 to 19	286	16.1%	16.1%
Aged 20 to 29	185	10.4%	14.0%
Aged 30 to 44	318	17.9%	13.8%
Aged 45 to 59	380	21.4%	19.3%
Aged 60 to 64	127	7.2%	7.2%
Aged 65 to 74	209	11.8%	13.9%
Aged 75 and over	179	10.1%	11.8%
Country of birth			
Born in UK	1,673	94.2%	92.9%
Born outside of UK	103	5.8%	7.1%
National Identity			
One or more UK identity	1,672	94.1%	93.4%
UK identity and non-UK identity	47	2.6%	1.7%
Non-UK identity	58	3.3%	4.9%
Religion			
Christian	917	51.7%	46.7%
No religion	712	40.1%	43.0%
Other religion	28	1.6%	2.6%

Housing & Household Composition:

	LSOA		Ceredigion
	No	%	%
Tenure			
Owned	635	82.5%	68.6%
Private rented	108	14.0%	20.6%
Social rented	21	2.7%	10.5%
Shared ownership	6	0.8%	0.3%
Lives rent free	0	0.0%	0.0%
Accommodation Type			
Detached	404	52.3%	50.7%
Semi detached	284	36.8%	23.1%
Terraced	75	9.7%	14.1%
Flat, maisonette or apartment	7	0.9%	11.3%
Caravan or other mobile temporary	2	0.3%	0.8%
Household composition			
One person household	206	26.8%	33.0%
Single family household	540	70.1%	60.4%
Other household types	24	3.1%	6.6%
Central Heating			
No central heating	19	2.5%	2.6%
Occupancy Rating			
Overcrowded households	12	1.6%	1.4%
Number of bedrooms			
1 bedroom	13	1.7%	7.4%
2 bedrooms	187	24.3%	23.6%
3 bedrooms	386	50.1%	42.5%
4+ bedrooms	184	23.9%	26.5%
Number of cars or vans			
No car or van	55	7.1%	15.7%
Deprivation			
Households deprived in one or more deprivation dimensions	334	43.4%	52.9%

Labour Market & Education:

	LSOA		Ceredigion
	No	%	%
Economic activity status			
Economically active (in employment)	860	58.5%	46.8%
Economically active (unemployed)	36	2.5%	1.8%
Economically inactive	556	37.8%	47.9%
<i>Retired</i>	373	25.4%	27.7%
<i>Student</i>	62	4.2%	10.0%
<i>Looking after home or family</i>	47	3.2%	3.5%
<i>Long-term sick or disabled</i>	34	2.3%	4.4%
Top 3 Industries			
Public administration, education and health	428	49.1%	35.1%
Distribution, hotels and restaurants	141	16.2%	21.8%
Financial, real estate, professional and administrative activities	65	7.5%	10.5%
Education			
No Qualifications (all aged 16+)	168	11.5%	14.7%
Qualifications Level 2	232	15.8%	13.7%
Apprenticeship	90	6.1%	5.4%
Travel to Work			
Work mainly at/from home	230	26.3%	31.6%
Driving car/van	563	64.3%	51.1%
Bus	15	1.7%	1.3%
On foot	27	3.1%	10.0%